

TERRENOS INDUSTRIALES



# Skautz.

GUIDING YOUR REAL ESTATE JOURNEY

|

## LAND IN SALE 32 HECTARES

EL MARQUÉS, QUERÉTARO





# LAND OF 32 HA IN SALE

## LOCATION:

El Marqués, Querétaro.

## STRATEGIC LOCATION.

It borders the General Motors Vehicle Park and other Industrial Parks.

A few minutes from the Queretaro's International Airport, thereby streamlining the logistics and distribution of products at a national and international level.





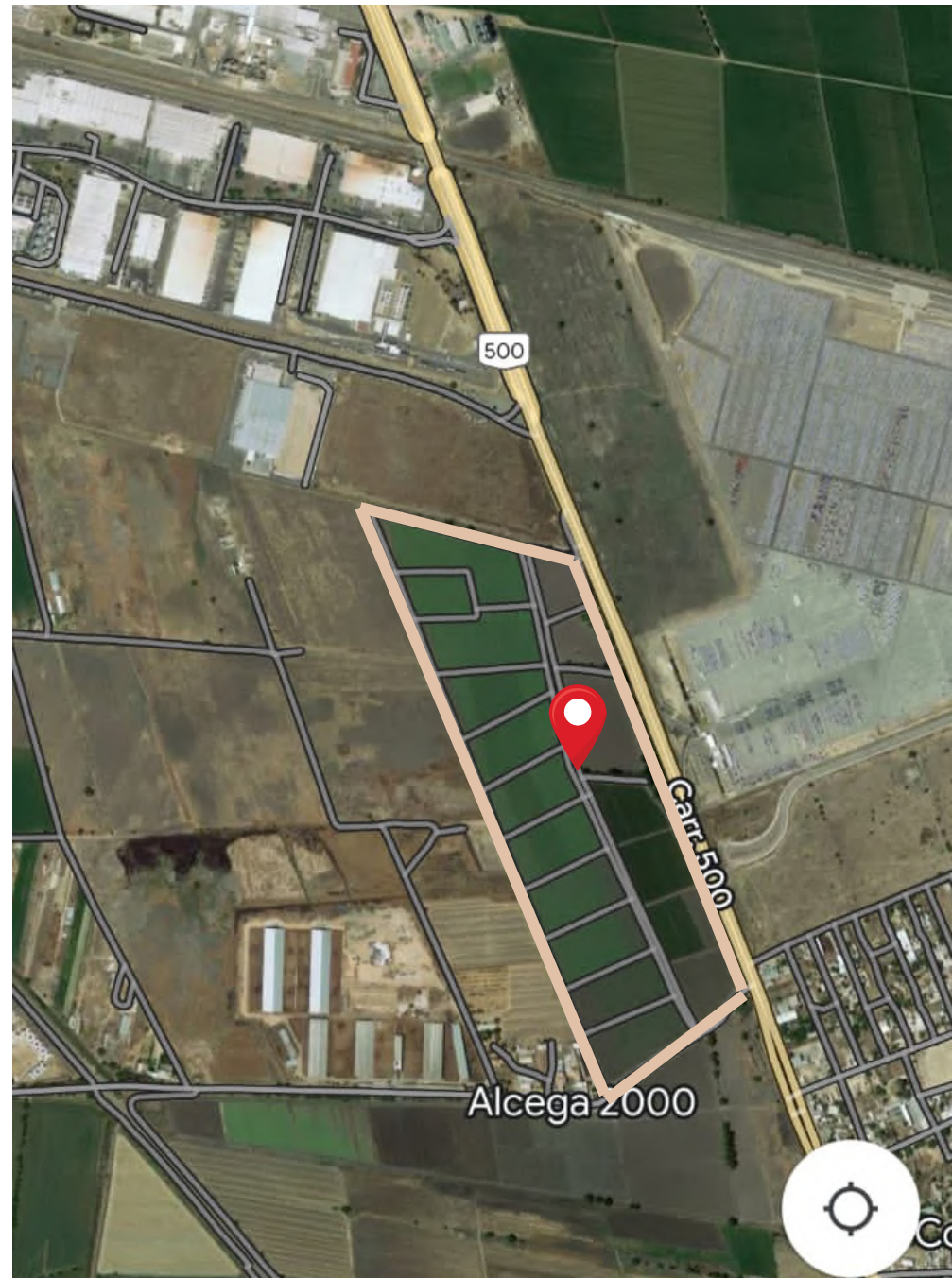


# LOCATION

<https://www.google.com/maps/@20.6076686,-100.2164192,3a,75y,281.62h,83.23t/data=!3m6!1e1!3m4!1s3FydYIUo5kZ8ZaUR1x4NzA!2e0!7i16384!8i8192?entry=ttu>

Fastest growing area in the state of Queretaro, with excellent transportation connections.

Growing Industrial Corridor:  
It is recognized nationally and internationally for its expansion and continuous development.



# LOCATION







# IDEAL FOR INDUSTRIAL, COMMERCIAL OR RESIDENTIAL PROJECT







# FEATURES:

FULLY WRITTEN  
And transparency in the  
process with professionals



5 minutes from Queretaro  
International Airport



One kilometer of frontage  
on State Highway



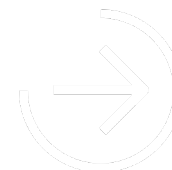
Symmetry of the ideal  
terrain for projects



Conductive environment for  
Nearshoring, as well as  
collaboration and networking



It has 3 water wells that supply  
the 32 hectares.







# Skautz.

ADRIANA VALADEZ  
adriana@skautz.com  
+52 442 130 1751

[skautz.com](https://skautz.com)